

HOLLISTER-WHITNEY

HAND RELEASE LEVER BULLETIN

GL SERIES DISC BRAKES

To all customers installing or servicing the Hollister Whitney GL Series Machines

All Hollister-Whitney Gearless Machine Disc Brakes are supplied with a Hand Release Lever. This Lever is secured by a single nut "A" (see Figure 2). Nut "A" IS FACTORY SET AND SHOULD NOT NORMALLY BE ADJUSTED, but it has been found that some have been inadvertently tightened in the field.



Improper Tightening of Nut "A" can prevent full activation of the Brake Shoes to the Rotor and can cause the Brake to fail.



Hollister-Whitney recommends the Hand Release Stroke be checked to assure proper operation.

Read and Understand the instructions presented here prior to making any adjustments.



WARNING!
BEFORE ADJUSTING BRAKES, OBSERVE ALL PROPER PROCEDURES FOR SECURING CAR, AND PREVENTING CAR MOVEMENT DURING INSPECTION PROCEDURE.



- 1) If a Hand Release Cable has been installed, first loosen and remove nuts securing Cable End (see Figure 1) to the Brake Release Lever Arm.

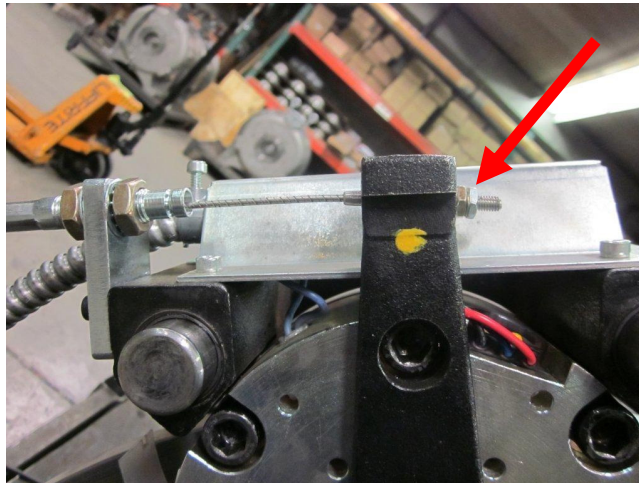


Figure 1: Remove Nuts on Release Cable

- 2) Check the Free Travel of the Hand Release Lever:
 - a) Per procedures in Bulletin #1146 "Installation and Maintenance Manual" use feeler gauge to make sure Air Gap on Disc Brake is 0.015" (15 thousandths of an inch)
 - b) Referring to picture (see Figure 3), lay a ruler or tape measure across top of the Disc Brake near end of the Hand Release Lever.
 - c) With finger pressure, Hand Release Lever should have at least 5/8 inch Stroke in both directions
 - d) If Hand Release Stroke is not at least 5/8 inch, adjust as follows:
 - Push Hand Lever in one direction to remove slack
 - Maintaining this pressure, use socket wrench (or equal) to loosen Nut "A" until 5/8 inch of Stroke is achieved.

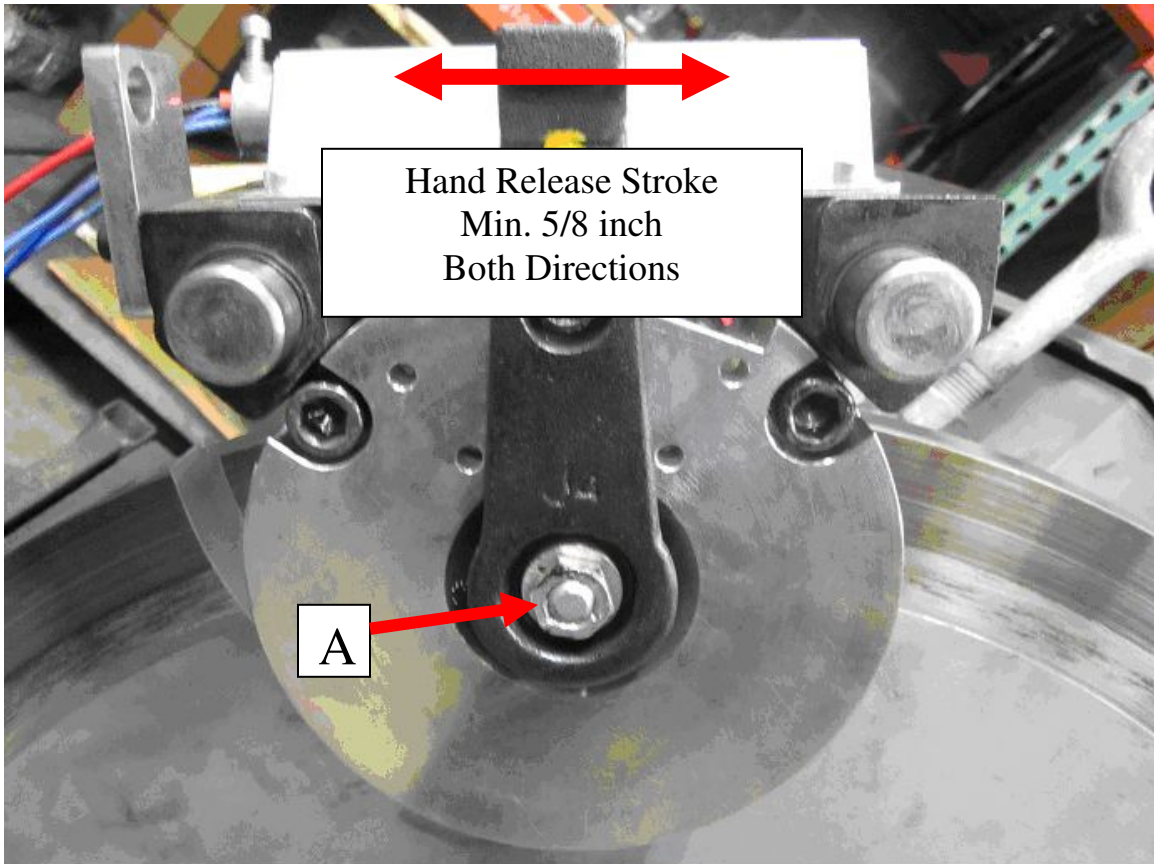


Figure 2: Lever Nut "A" & Stroke



Figure 3: Measuring Stroke

- 3) With Permanent Ink Marker or Paint Marker, draw a single line across NUT "A" AND BOLT END to help indicate:
- a) The Hand Release Stroke has been Checked and/or Adjusted, and
 - b) to help indicate if Nut "A" has been moved in the future.

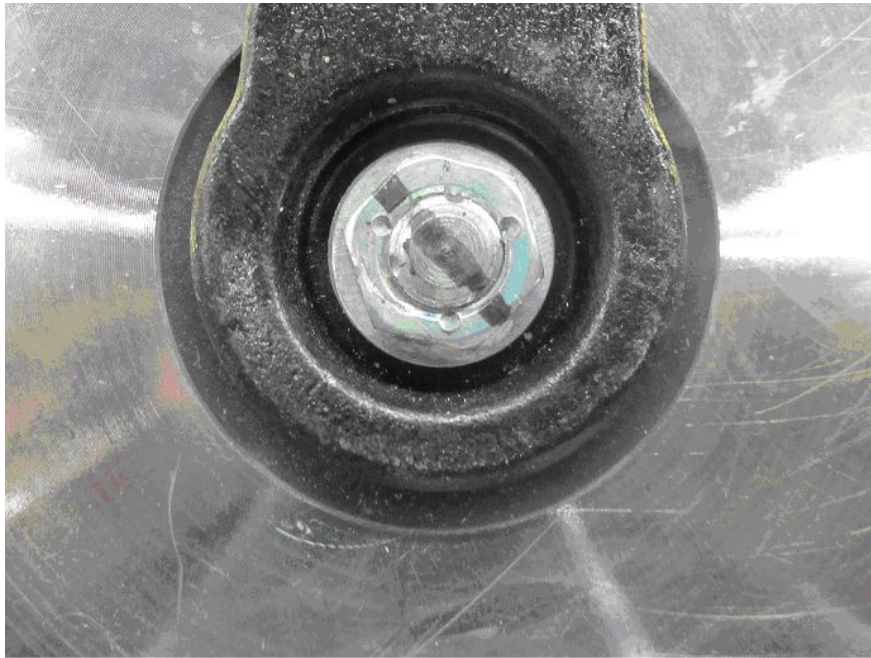


Figure 4: Line Indicating Stroke Check Performed

- 4) Apply plastic cover to nut, and apply "DO NOT ADJUST" signage (extra stickers available from Hollister-Whitney on request)



Figure 5: Cap Installed over Nut "A"



Figure 6: Install Caution Sticker

- 5) Recheck Disc Brake Air Gap per procedures in Bulletin #1146 "Installation and Maintenance Manual" to make sure Air Gap on Disc Brake is 0.015" (15 thousandths of an inch).
- 6) Reinstall Hand Release Cable per instructions in Bulletin #1146 "Installation and Maintenance Manual"